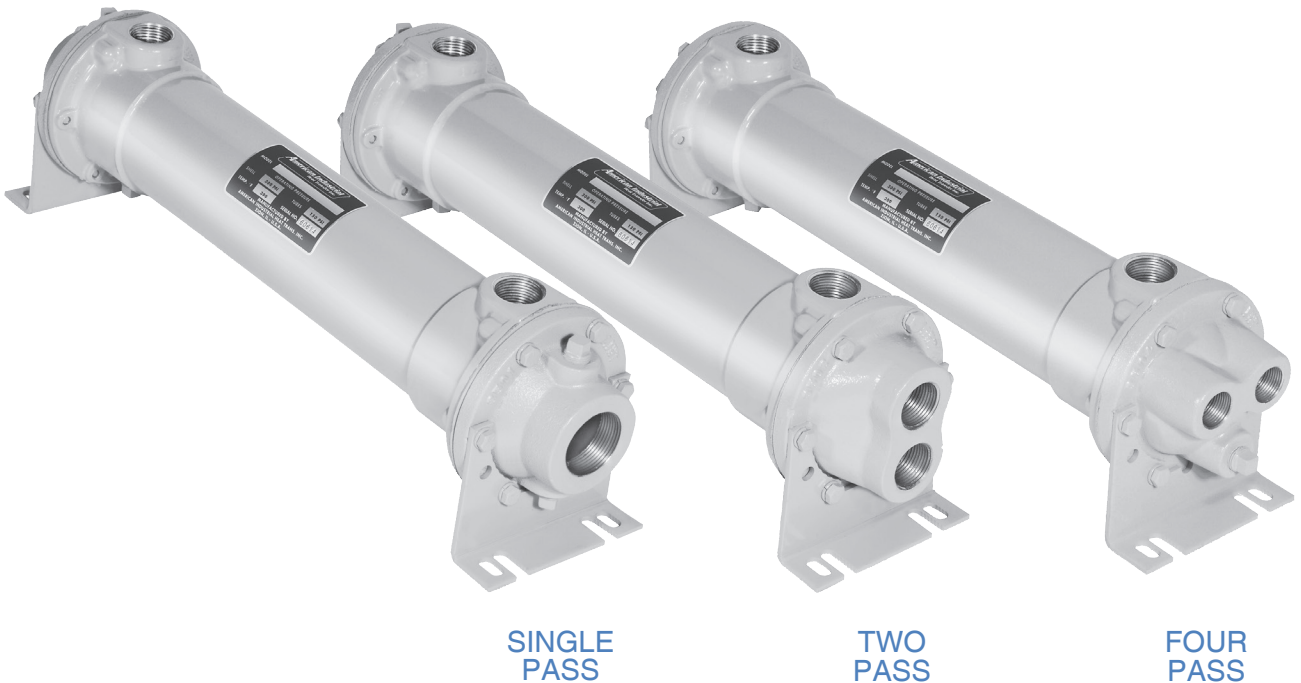


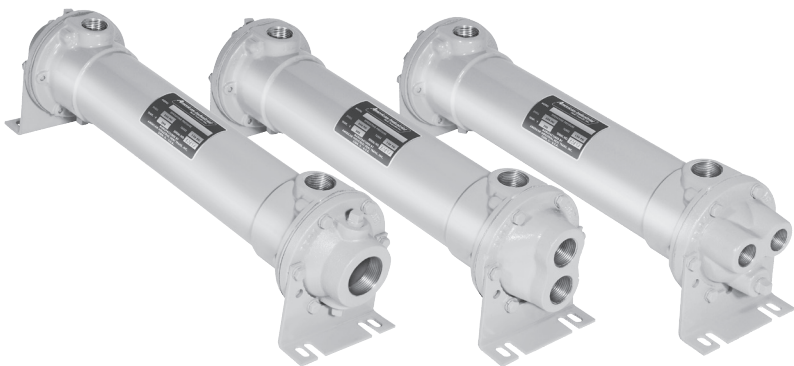
STS - SERIES



Fixed Tube Bundle / Liquid Cooled

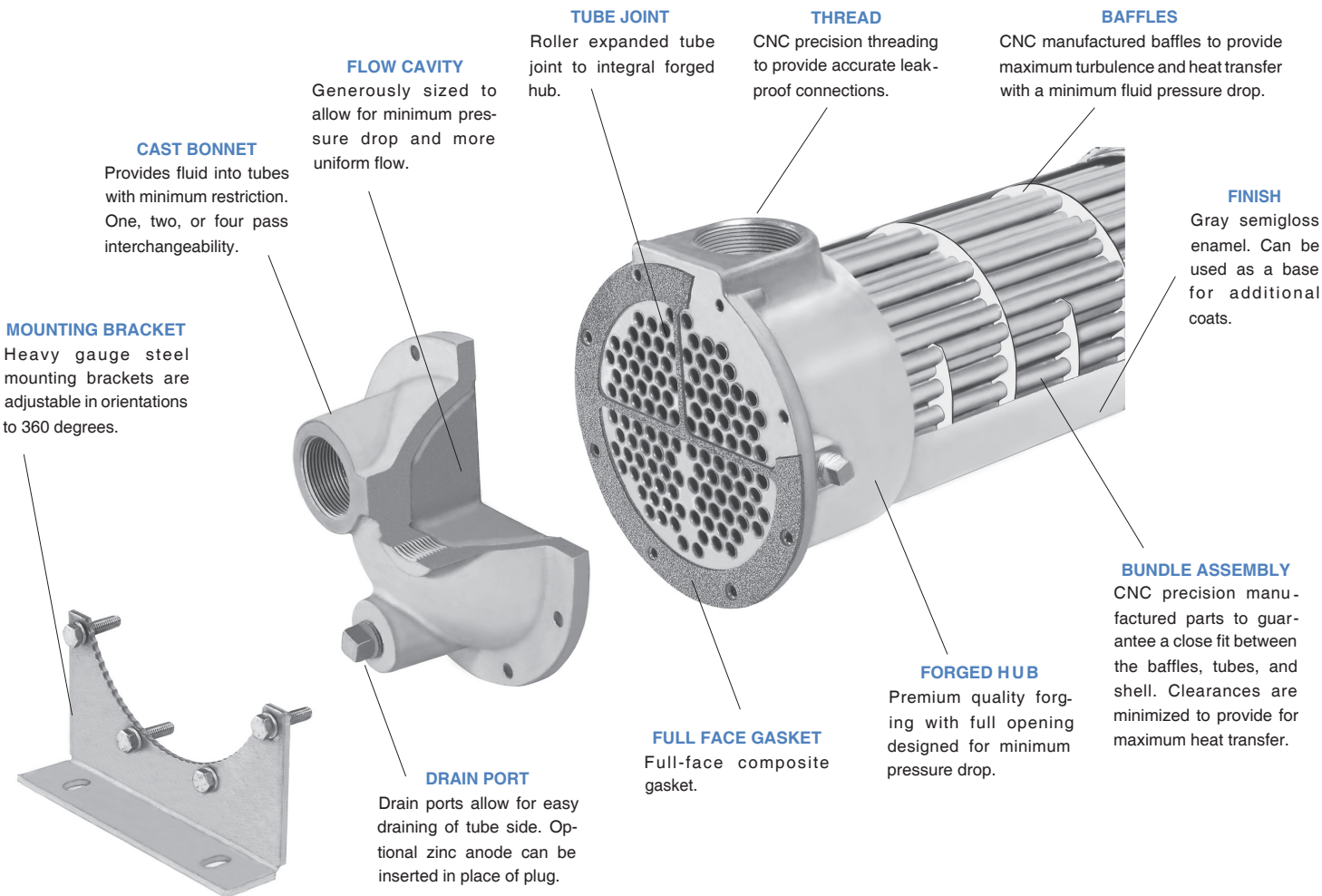
HEAT EXCHANGERS

- Computer generated data sheet available for any application
- Operating pressure for tubes 150 PSI.
- Operating pressure for shell 300 PSI.
- Operating temperature 300 °F.
- Can be customized to fit any applications.
- Cools: Fluid power systems, rock crushers, presses, shears, lubrication equipment for paper machinery, gear drives, marine transmissions, etc.



STS Series

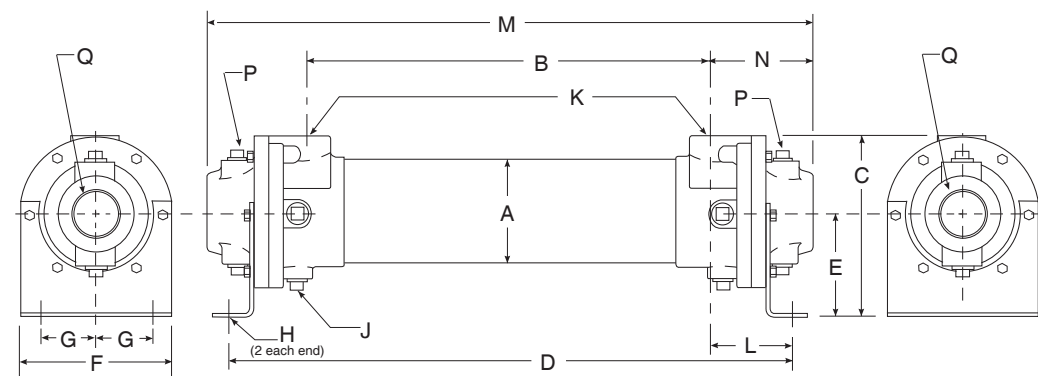
Similar in design to AB series with fixed tube construction and NPT connections made of all 316 stainless steel. Standard sizes from 2" through 8" diameters, and from 1.4 to 308 sq.ft. Standard one, two and four pass models are available. Larger diameters available upon request. Can be customized to fit your requirements.



STANDARD CONSTRUCTION MATERIALS & RATINGS

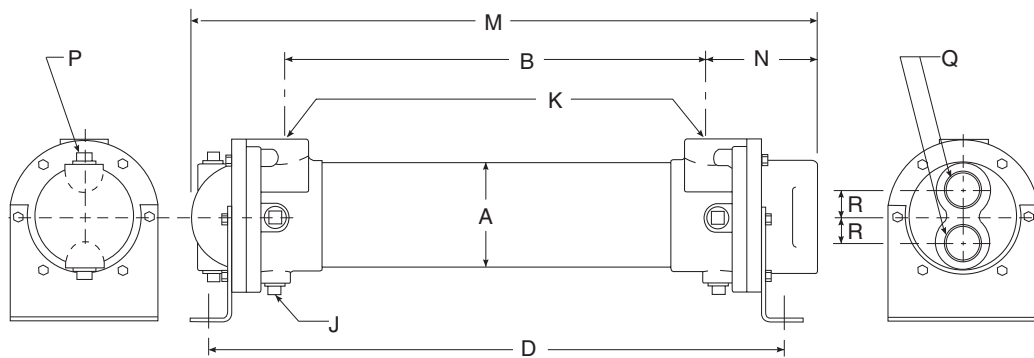
Standard Model	AB Series	SAE Series	STS Series	EAB Series	Standard Unit Ratings
Shell	Brass	Brass	316 Stainless Steel	Steel	Operating Pressure Tubes.....150 psig
Tubes	Copper	Copper	316 Stainless Steel	90/10 Copper Nickel	
Baffle	Aluminum / Brass	Brass	316 Stainless Steel	Brass	
Integral End Hub	Forged Brass	Forged Brass	316 Stainless Steel	Forged Brass	Operating Pressure Shell.....300 psig
End Bonnets	Cast Iron	Cast Iron	316 Stainless Steel	Cast Iron	
Mounting Brackets	Steel	Steel	Steel	Steel	Operating Temperature 300 °F
Gasket	Hypalon Composite	Hypalon Composite	Hypalon Composite	High Temp Gasket	
Expansion Bellows	—	—	—	Stainless Steel	

STS Series *dimensions*



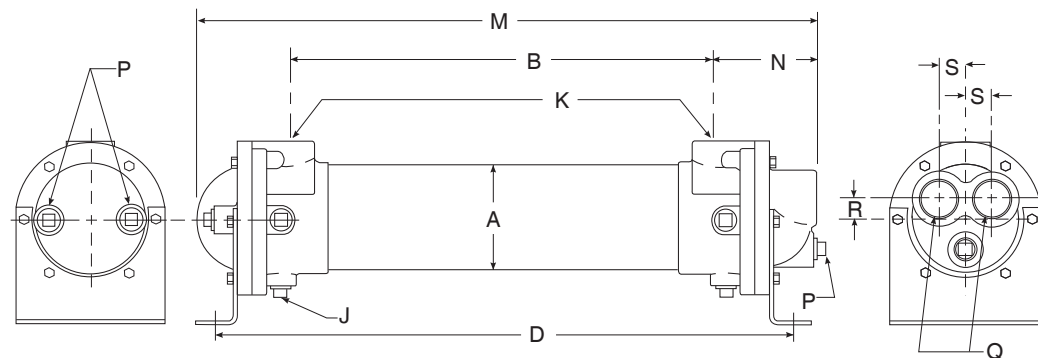
SINGLE PASS (SP)

Model	M	N	P NPT	Q NPT
STS-401	11.24	1.81	-	1.00
STS-402	20.24			
STS-701	13.47			
STS-702	22.47			
STS-703	31.47	3.24	(4) .38	1.50
STS-704	40.47			
STS-1002	23.60			
STS-1003	32.60			
STS-1004	41.60	4.05	(4) .38	2.00
STS-1202	24.38			
STS-1203	33.25			
STS-1204	42.12			
STS-1205	51.12	4.88	(4) .50	3.00
STS-1206	60.25			
STS-1207	69.25			
STS-1208	78.12			
STS-1209	87.12	6.52	(4) .50	4.00
STS-1210	96.12			
STS-1602	26.62			
STS-1603	35.62			
STS-1604	44.62			
STS-1605	53.62			
STS-1606	62.62			
STS-1607	71.62			
STS-1608	80.62			
STS-1609	89.62			
STS-1610	98.62			



TWO PASS (TP)

Model	M	N	P NPT	Q NPT	R
STS-701	13.28	3.30	(2) .38	1.00	.88
STS-702	22.28				
STS-703	31.28				
STS-704	40.28				
STS-1002	23.29	3.80	(2) .38	1.50	1.19
STS-1003	32.29				
STS-1004	41.29				
STS-1202	23.94				
STS-1203	32.81	4.56	(2) .50	2.00	1.44
STS-1204	41.69				
STS-1205	50.69				
STS-1206	59.81				
STS-1207	68.81	6.08	(2) .50	2.50	1.88
STS-1208	77.69				
STS-1209	86.69				
STS-1210	95.69				
STS-1602	25.10	6.08	(2) .50	2.50	1.88
STS-1603	34.10				
STS-1604	43.10				
STS-1605	52.10				
STS-1606	61.10				
STS-1607	70.10				
STS-1608	79.10				
STS-1609	88.10				
STS-1610	97.10				



FOUR PASS (FP)

Model	M	N	P NPT	Q NPT	R	S
STS-701	13.42	3.24	(3) .38	.75	.62	.88
STS-702	22.42					
STS-703	31.42					
STS-704	40.42					
STS-1002	23.55	4.06	(3) .38	1.00	.75	1.19
STS-1003	32.55					
STS-1004	41.55					
STS-1202	24.44					
STS-1203	33.31	4.90	(3) .50	1.50	1.06	1.44
STS-1204	42.19					
STS-1205	51.19					
STS-1206	60.31					
STS-1207	69.31	6.48	(3) .50	2.00	1.38	1.88
STS-1208	78.19					
STS-1209	87.19					
STS-1210	96.19					
STS-1602	26.72	6.48	(3) .50	2.00	1.38	1.88
STS-1603	35.72					
STS-1604	44.72					
STS-1605	53.72					
STS-1606	62.72					
STS-1607	71.72					
STS-1608	80.72					
STS-1609	89.72					
STS-1610	98.72					

COMMON DIMENSIONS & WEIGHTS

Model	A	B	C	D	E	F	G	H	J NPT	K NPT	L	Approx. Weight	Model
STS-401	2.13	7.62	3.50	10.91	1.94	2.62	.88	.41φ	-	.50	1.72	7	STS-401
STS-402		16.62		20.91									STS-402
STS-701		7.00		12.38									STS-701
STS-702		16.00		21.38									STS-702
STS-703	3.66	25.00	6.25	30.38	3.62	5.25	1.50	.44φ x 1.00	(2) .38	1.00	2.69	23	STS-703
STS-704		34.00		39.38									STS-704
STS-1002		15.50		21.62									STS-1002
STS-1003		24.50		30.62									STS-1003
STS-1004	5.13	33.50	7.38	39.62	4.00	6.75	2.00	.44φ x 1.00	(6) .38	1.50	3.06	49	STS-1004
STS-1202		14.62		21.50									STS-1202
STS-1203		23.50		30.38									STS-1203
STS-1204		32.38		39.25									STS-1204
STS-1205	6.13	41.38	8.81	48.25	4.75	7.50	2.50	.44φ x 1.00	(6) .38	2.00	3.44	115	STS-1205
STS-1206		50.50		57.38									STS-1206
STS-1207		59.50		66.38									STS-1207
STS-1208		68.38		75.25									STS-1208
STS-1209	8.00	77.38	12.13	84.25	6.50	10.00	3.50	.44φ x 1.00	(6) .38	3.00	4.39	170	STS-1209
STS-1210		86.38		93.25									STS-1210
STS-1602		13.60		22.38									STS-1602
STS-1603		22.60		31.38									STS-1603
STS-1604	8.00	31.60	12.13	40.38	6.50	10.00	3.50	.44φ x 1.00	(6) .38	3.00	4.39	200	STS-1604
STS-1605		40.60		49.38									STS-1605
STS-1606		49.60		58.38									STS-1606
STS-1607		58.60		67.38									STS-1607
STS-1608	8.00	67.60	12.13	76.38	6.50	10.00	3.50	.44φ x 1.00	(6) .38	3.00	4.39	275	STS-1608
STS-1609		76.60		85.38									STS-1609
STS-1610		85.60		94.38									STS-1610