

SINGLE
PASS

TWO
PASS

FOUR
PASS

Fixed Tube Bundle / Liquid Cooled

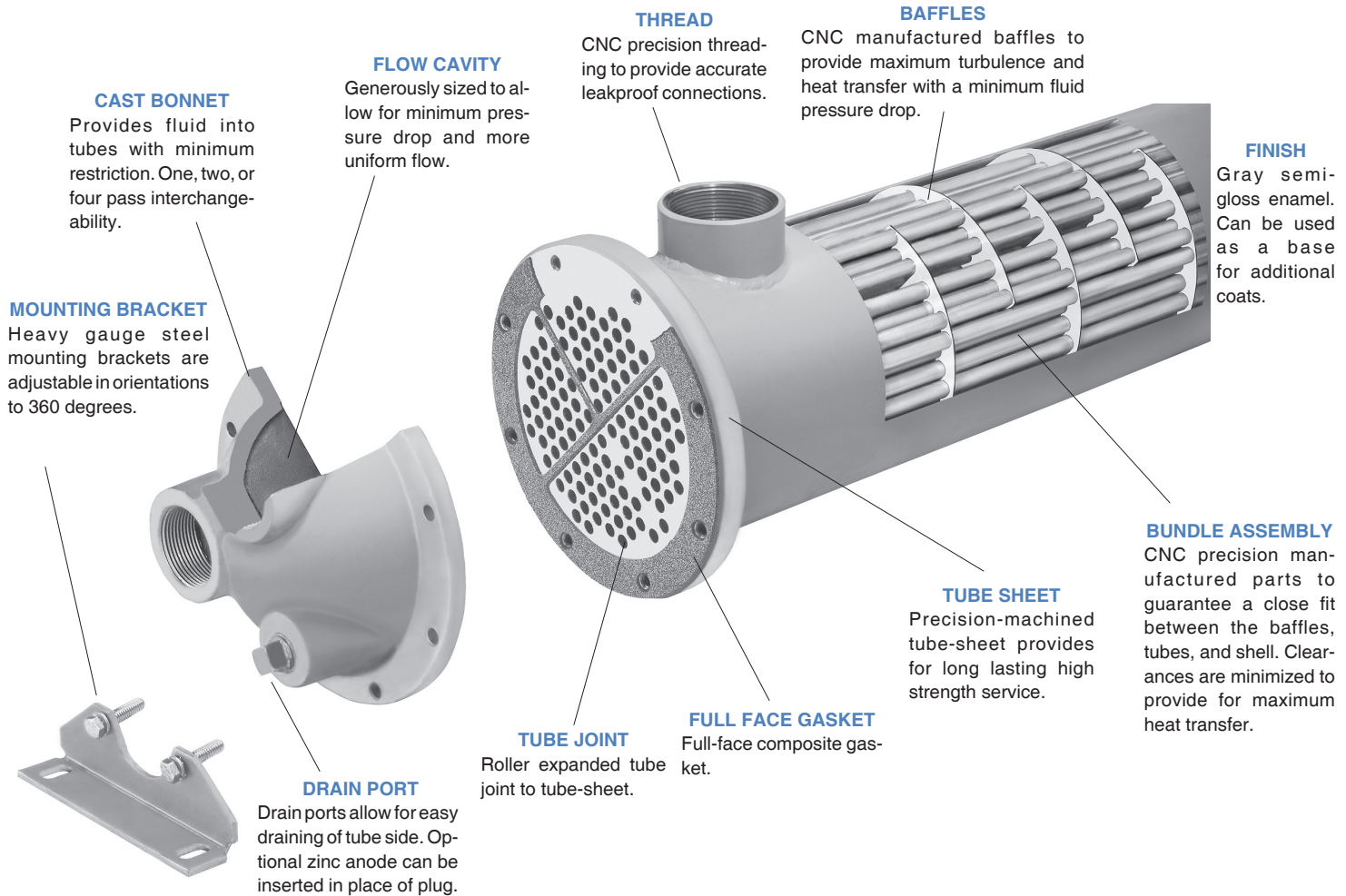
HEAT EXCHANGERS



STC SERIES

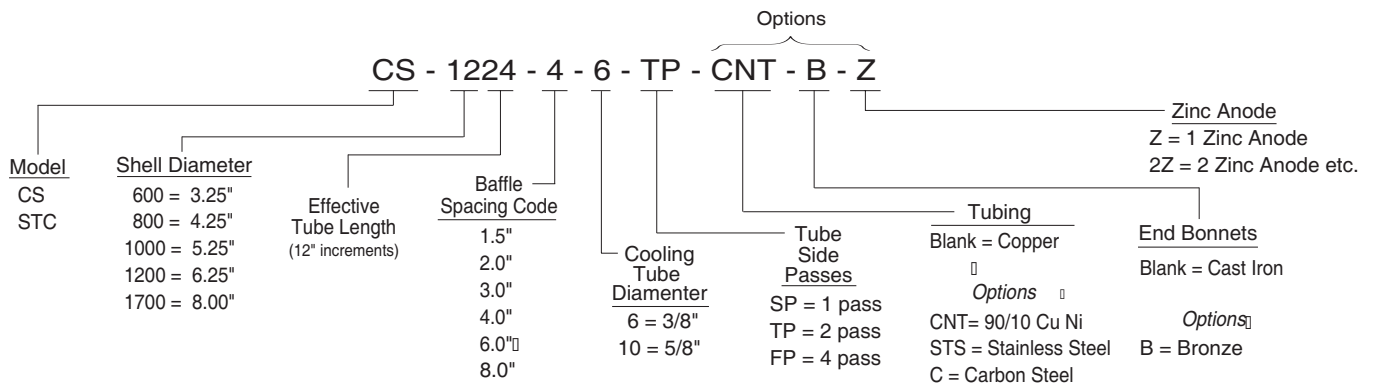
Similar in design to CS series with fixed tube construction and NPT connections made of 316 stainless steel. Standard sizes from 3" through 8" diameters. Standard one, two, and four pass models are available. Larger diameter units available upon request. Can be customized to fit your requirements.

- Computer generated data sheet available for any application
- Steel or stainless steel construction.
- Operating pressure for tubes 150 PSI
- Operating pressure for shell 300 PSI.
- Operating temperature 300 °F.
- Can be customized to fit any applications.
- Cools: Fluid power systems, rock crushers, presses, shears, lubrication equipment for paper machinery, gear drives, marine transmissions, etc.
- As an option, available in ASME code and certified



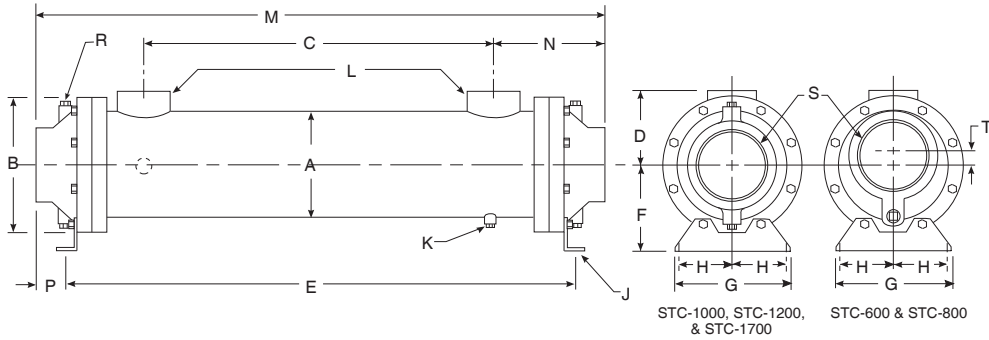
Example Model

UNIT CODING



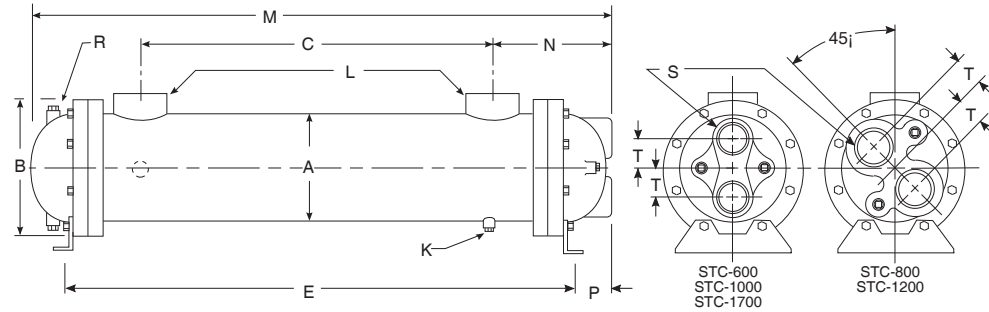
Standard Model	CS Series	STC Series	Standard Unit Ratings
Shell	Steel	316 Stainless Steel	Operating Pressure Tubes 150 psig Operating Pressure Shell 300 psig Operating Temperature 300 °F
Tubes	Copper	316 Stainless Steel	
Baffle	Aluminum / Steel	316 Stainless Steel	
Tube Sheet	Steel	316 Stainless Steel	
End Bonnets	Cast Iron	316 Stainless Steel	
Mounting Brackets	Steel	Steel	
Gasket	Hypalon Composite	Hypalon Composite	

STC Series *dimensions*



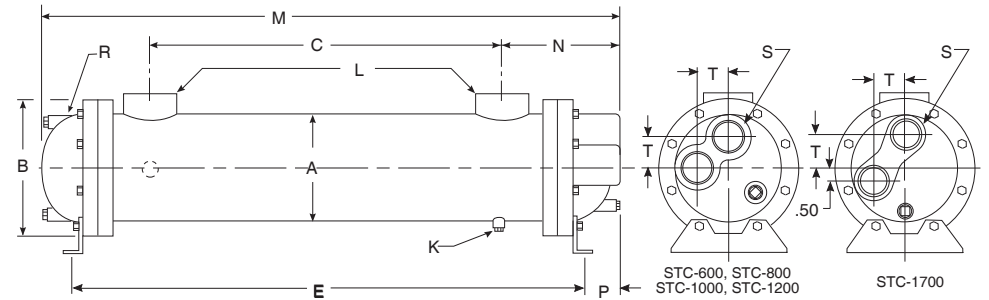
Single Pass (SP)

Model	M	N	P	R NPT	S NPT	T
STC-614	17.18	3.70	.40	(2) .38	1.50	.38
STC-624	27.18					
STC-814	17.88	4.44	.63	(2) .38	2.00	.50
STC-824	27.88					
STC-836	39.88					
STC-1014	19.09	5.05	.92	(4) .38	2.00	-
STC-1024	29.09					
STC-1036	41.09					
STC-1224	30.00					
STC-1236	42.00					
STC-1248	54.00	5.88	1.43	(4) .50	3.00	-
STC-1260	66.00					
STC-1272	78.00					
STC-1724	31.47	7.23	1.99	(4) .50	4.00	-
STC-1736	43.47					
STC-1748	55.47					
STC-1760	67.47					
STC-1772	79.47					
STC-1784	91.47					



Two Pass (TP)

Model	M	N	P	R NPT	S NPT	T
STC-614	17.12	3.70	.38	(2) .38	1.00	1.00
STC-624	27.12					
STC-814	17.88	4.44	.63	(2) .38	1.25	1.06
STC-824	27.88					
STC-836	39.88					
STC-1014	18.62	5.00	.94	(2) .38	1.50	1.19
STC-1024	28.62					
STC-1036	40.62					
STC-1224	29.03					
STC-1236	41.03					
STC-1248	53.03	5.44	1.00	(2) .50	2.00	1.44
STC-1260	65.03					
STC-1272	77.03					
STC-1724	30.62	7.06	1.81	(2) .50	2.50	1.88
STC-1736	42.62					
STC-1748	54.62					
STC-1760	66.62					
STC-1772	78.62					
STC-1784	90.62					



Four Pass (FP)

Model	M	N	P	R NPT	S NPT	T
STC-614	17.12	3.70	.38	(2) .38	.75	1.00
STC-624	27.12					
STC-814	17.88	4.44	.63	(3) .38	.75	1.25
STC-824	27.88					
STC-836	39.88					
STC-1014	18.81	4.81	.75	(3) .38	1.00	1.69
STC-1024	28.81					
STC-1036	40.81					
STC-1224	29.13					
STC-1236	41.13					
STC-1248	53.13	5.44	1.00	(3) .50	1.50	2.00
STC-1260	65.13					
STC-1272	77.13					
STC-1724	29.86	7.06	1.81	(3) .50	2.00	2.50
STC-1736	41.86					
STC-1748	53.86					
STC-1760	65.86					
STC-1772	77.86					
STC-1784	89.86					

COMMON DIMENSIONS & WEIGHTS

Model	A	B	C	D	E	F	G	H	J	K NPT	L NPT	Approx. Weight	Model
STC-614			10.00		17.00							17	STC-614
STC-624	3.13	4.50	20.00	2.31	27.00	2.75	4.18	1.62	.38φx0.88	(2) .25	1.00	24	STC-624
STC-814			9.00		16.62							32	STC-814
STC-824	4.25	6.00	19.00	3.12	26.62	3.50	4.25	1.75	.44φx1.00	(2) .25	1.50	41	STC-824
STC-836			31.00		38.62							53	STC-836
STC-1014			9.00		17.12							43	STC-1014
STC-1024	5.25	6.75	19.00	3.62	27.12	4.00	5.25	2.00	.44φx1.00	(2) .25	1.50	57	STC-1024
STC-1036			31.00		39.12							72	STC-1036
STC-1224			18.25		27.13							85	STC-1224
STC-1236			30.25		39.13							110	STC-1236
STC-1248	6.25	7.75	42.25	4.16	51.13	4.50	6.25	2.50	.44φx1.00	(2) .38	2.00	135	STC-1248
STC-1260			54.25		63.13							160	STC-1260
STC-1272			66.25		75.13							185	STC-1272
STC-1724			17.00		27.50							140	STC-1724
STC-1736			29.00		39.50							180	STC-1736
STC-1748	8.00	10.12	41.00	5.62	51.50	5.75	8.25	3.50	.44φx1.00	(2) .38	3.00	220	STC-1748
STC-1760			53.00		63.50							260	STC-1760
STC-1772			65.00		75.50							300	STC-1772
STC-1784			77.00		87.50							340	STC-1784