

STA SERIES



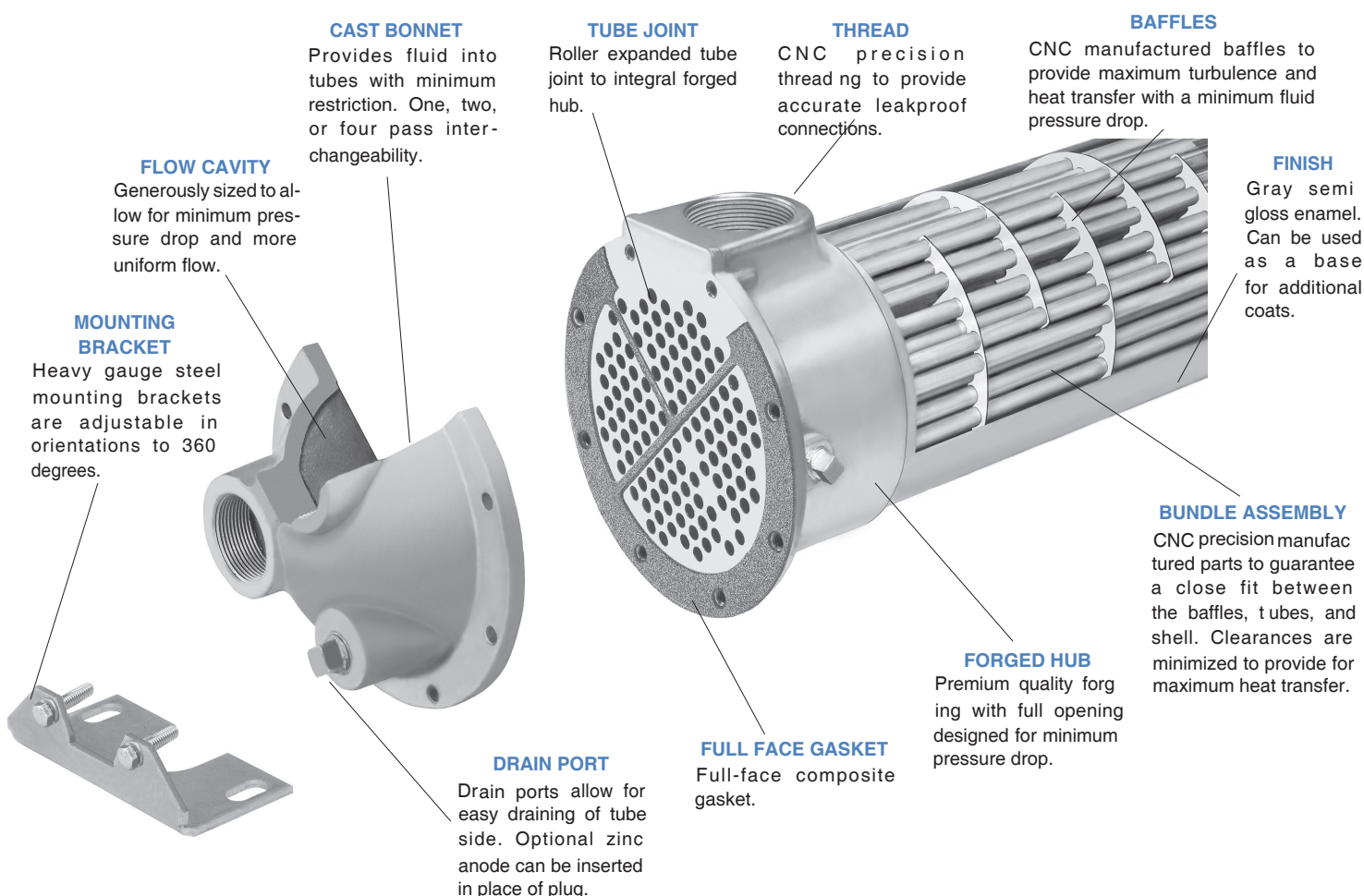
Fixed Tube Bundle Liquid Cooled

HEAT EXCHANGERS

- Computer generated data sheet available for any application
- Operating pressure for tubes 150 PSI.
- Operating pressure for shell 300 PSI.
- Operating temperature 300 °F.
- Can be customized to fit any applications.
- Cools: Fluid power systems, rock crushers, presses, shears, lubrication equipment for paper machinery, gear drives, marine transmissions, etc.

STA SERIES

Similar in design to AA series with fixed tube construction and NPT connections made of all 316 stainless steel. Standard sizes from 2" through 8" diameters. From 1.3 to 200 sq. ft. Standard one, two and four pass models are available. Larger diameters available upon request. Can be customized to fit your requirements.

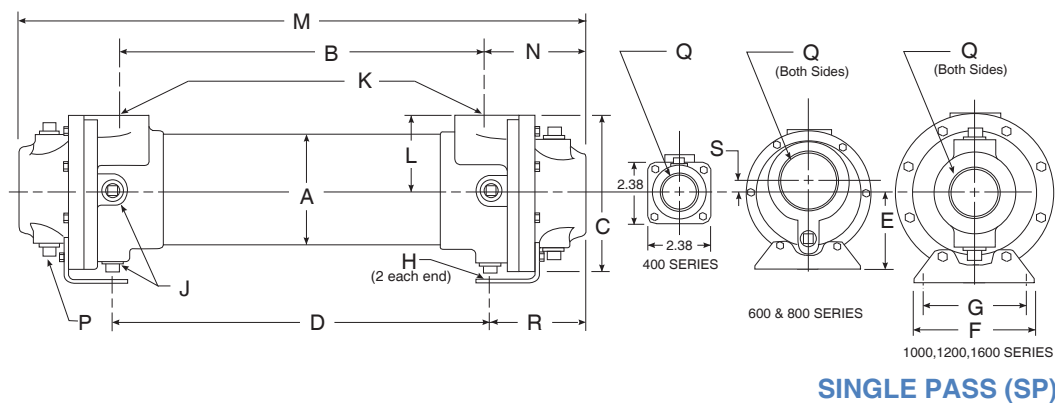


STANDARD CONSTRUCTION MATERIALS & RATINGS

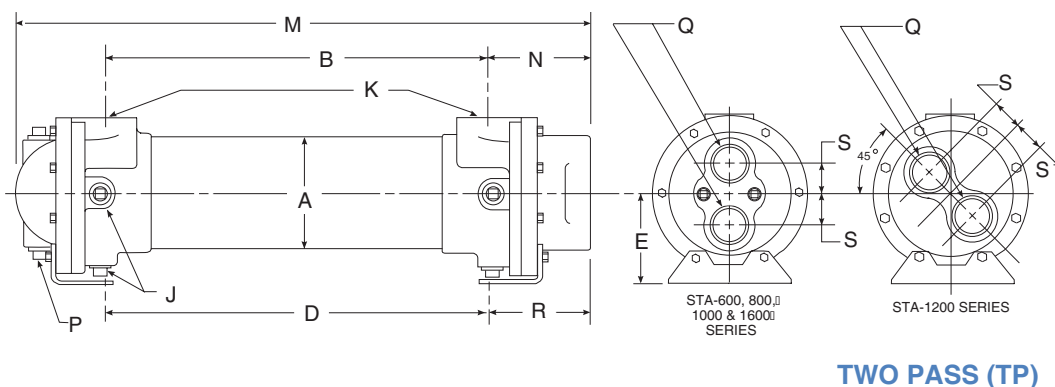
Standard Model	AA Series	SAA Series*	STA Series	Standard Unit Ratings
Shell	Brass	Steel	316 Stainless Steel	Operating Pressure Tubes 150 psig
Tubes	Copper	Copper	316 Stainless Steel	
Baffle	Aluminum / Brass	Aluminum / Brass	316 Stainless Steel	
Integral End Hub	Forged Brass	Forged Brass	316 Stainless Steel	Operating Pressure Shell 300 psig
End Bonnets	Cast Iron	Cast Iron	316 Stainless Steel	
Mounting Brackets	Steel	Steel	Steel	Operating Temperature 300 °F
Gasket	Hypalon Composite	Hypalon Composite	Hypalon Composite	

*Offered in 5" through 8" shell diameter.

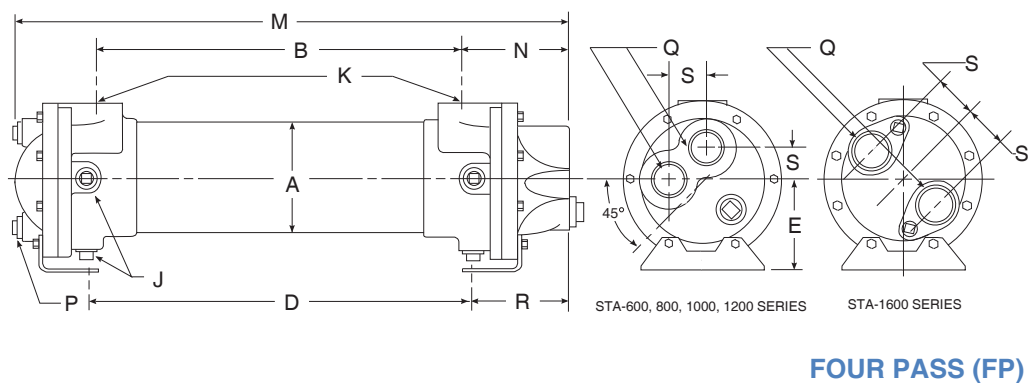
STA Series



Model	M	N	P NPT	Q NPT	R	S
STA-408	11.00	2.38	-	1.00	-	-
STA-608	11.25					
STA-614	17.25	2.56	(2)	1.50	3.06	0.38
STA-624	27.25		.38			
STA-814	18.00					
STA-824	28.00	3.44	(2)	2.00	2.56	0.50
STA-836	40.00		.38			
STA-1014	18.50					
STA-1024	28.50	3.69	(4)	2.50	3.38	-
STA-1036	40.50		.38			
STA-1224	29.25					
STA-1236	41.25					
STA-1248	53.25	4.25	(4)	3.00	3.75	-
STA-1260	65.25		.38			
STA-1272	77.25					
STA-1624	31.25					
STA-1636	43.25					
STA-1648	55.25	6.52	(4)	4.00	5.25	-
STA-1660	67.25		.50			
STA-1672	79.25					
STA-1684	91.25					



Model	M	N	P NPT	Q NPT	R	S
STA-608	10.75					
STA-614	16.75	2.44	(2)	1.00	2.94	1.00
STA-624	26.75		.38			
STA-814	17.62					
STA-824	27.62	3.44	(2)	1.25	2.56	1.19
STA-836	39.62		.38			
STA-1014	18.50					
STA-1024	28.50	3.69	(2)	1.50	3.50	1.50
STA-1036	40.50		.38			
STA-1224	28.75					
STA-1236	40.75					
STA-1248	52.75	4.25	(2)	2.00	3.75	1.56
STA-1260	64.75		.38			
STA-1272	76.75					
STA-1624	30.50					
STA-1636	42.50					
STA-1648	54.50	6.00	(2)	2.50	5.25	2.25
STA-1660	66.50		.50			
STA-1672	78.50					
STA-1684	90.50					



Model	M	N	P NPT	Q NPT	R	S
STA-608	10.88					
STA-614	16.88	2.44	(2)	.75	2.81	1.00
STA-624	26.88		.38			
STA-814	17.62					
STA-824	27.62	3.44	(2)	.75	2.56	1.06
STA-836	39.62		.38			
STA-1014	18.50					
STA-1024	28.50	3.80	(3)	1.00	3.25	1.69
STA-1036	40.50		.38			
STA-1224	29.50					
STA-1236	41.50					
STA-1248	53.50	4.56	(3)	1.50	3.75	2.00
STA-1260	65.50		.50			
STA-1272	77.50					
STA-1624	30.75					
STA-1636	42.75					
STA-1648	54.75	6.08	(4)	2.00	5.25	2.62
STA-1660	66.75		.50			
STA-1672	78.75					
STA-1684	90.75					

COMMON DIMENSIONS & WEIGHTS

Model	A	B	C	D	E	F	G	H	J NPT	K	L	Approx. Weight	Model
STA-408	2.125	6.25	-	-	-	-	-	-	-	.50	1.69	7	STA-408
STA-608		6.12		5.12								12	STA-608
STA-614	3.125	12.12	4.19	11.12	2.44	3.50	2.50	.38øx.88	(2)	1.00	2.44	16	STA-614
STA-624		22.12		21.12					.25			20	STA-624
STA-814		11.12		12.88								37	STA-814
STA-824	4.125	21.12	5.88	22.88	3.50	4.75	3.50	.50øx1.62	(6)	1.50	3.12	47	STA-824
STA-836		33.12		34.88					.38			67	STA-836
STA-1014		11.12		11.75								45	STA-1014
STA-1024	5.125	21.12	6.50	21.75	3.75	5.00	4.00	.50øx.88	(6)	1.50	3.62	60	STA-1024
STA-1036		33.12		33.75					.38			82	STA-1036
STA-1224		20.50		21.50								90	STA-1224
STA-1236		32.50		33.50								110	STA-1236
STA-1248	6.125	44.50	7.50	45.50	4.12	6.00	5.00	.50øx.88	(6)	2.00	4.25	130	STA-1248
STA-1260		56.50		57.50					.38			150	STA-1260
STA-1272		68.50		69.50								180	STA-1272
STA-1624		19.00		20.50								160	STA-1624
STA-1636		31.00		32.50								185	STA-1636
STA-1648		43.00		44.50								205	STA-1648
STA-1660	8.00	55.00	9.75	56.50	5.38	8.25	7.00	.62øx1.12	(6)	3.00	5.62	235	STA-1660
STA-1672		67.00		68.50					.38			280	STA-1672
STA-1684		79.00		80.50								320	STA-1684