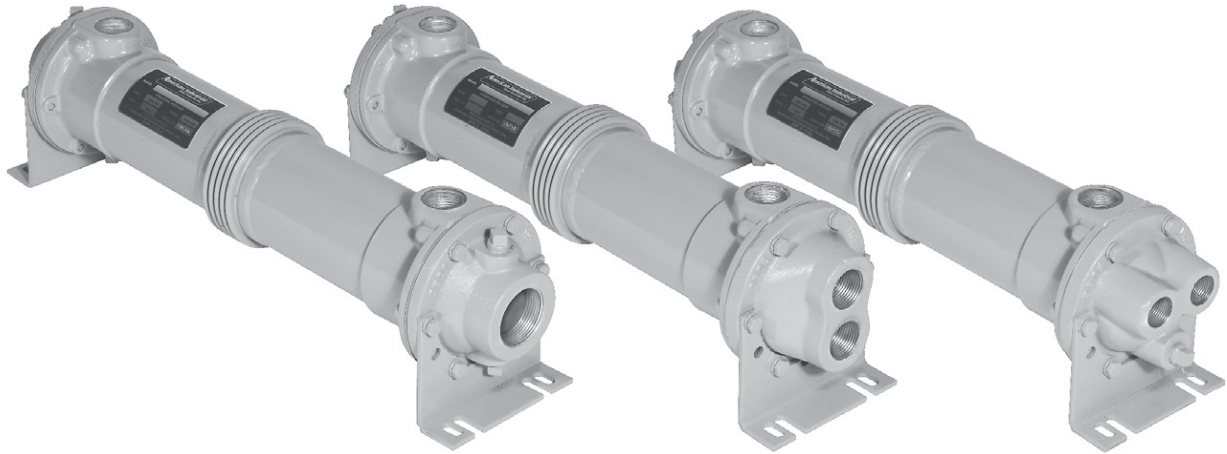


EAB SERIES



**SINGLE
PASS**

**TWO
PASS**

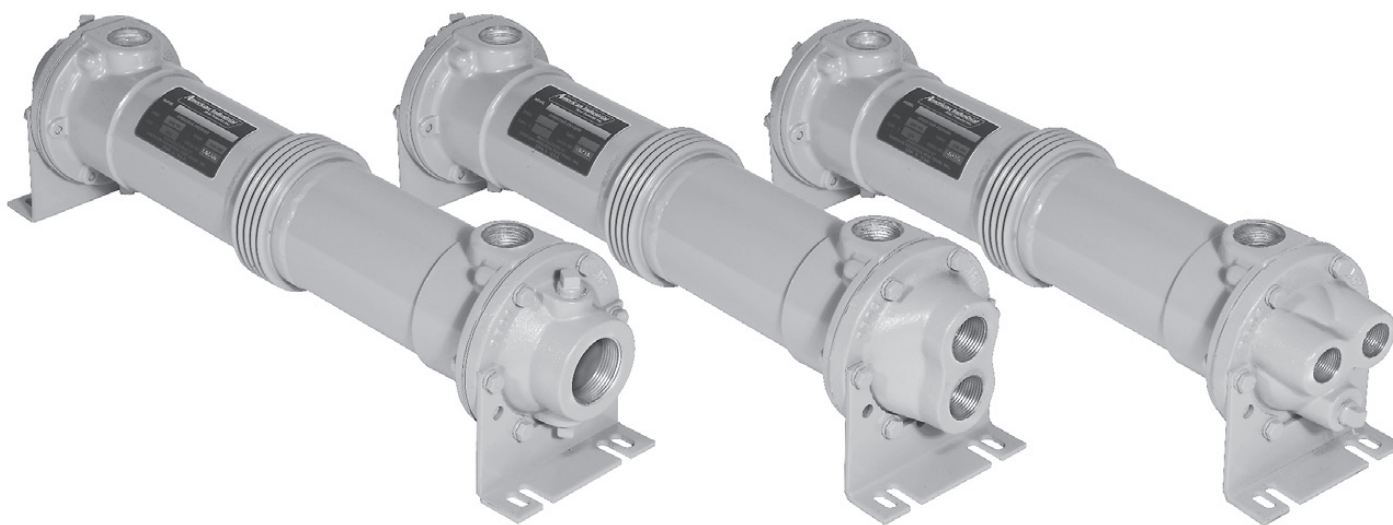
**FOUR
PASS**

Fixed Tube Bundle / Liquid Cooled

HEAT EXCHANGERS

1 (888) 226-8522

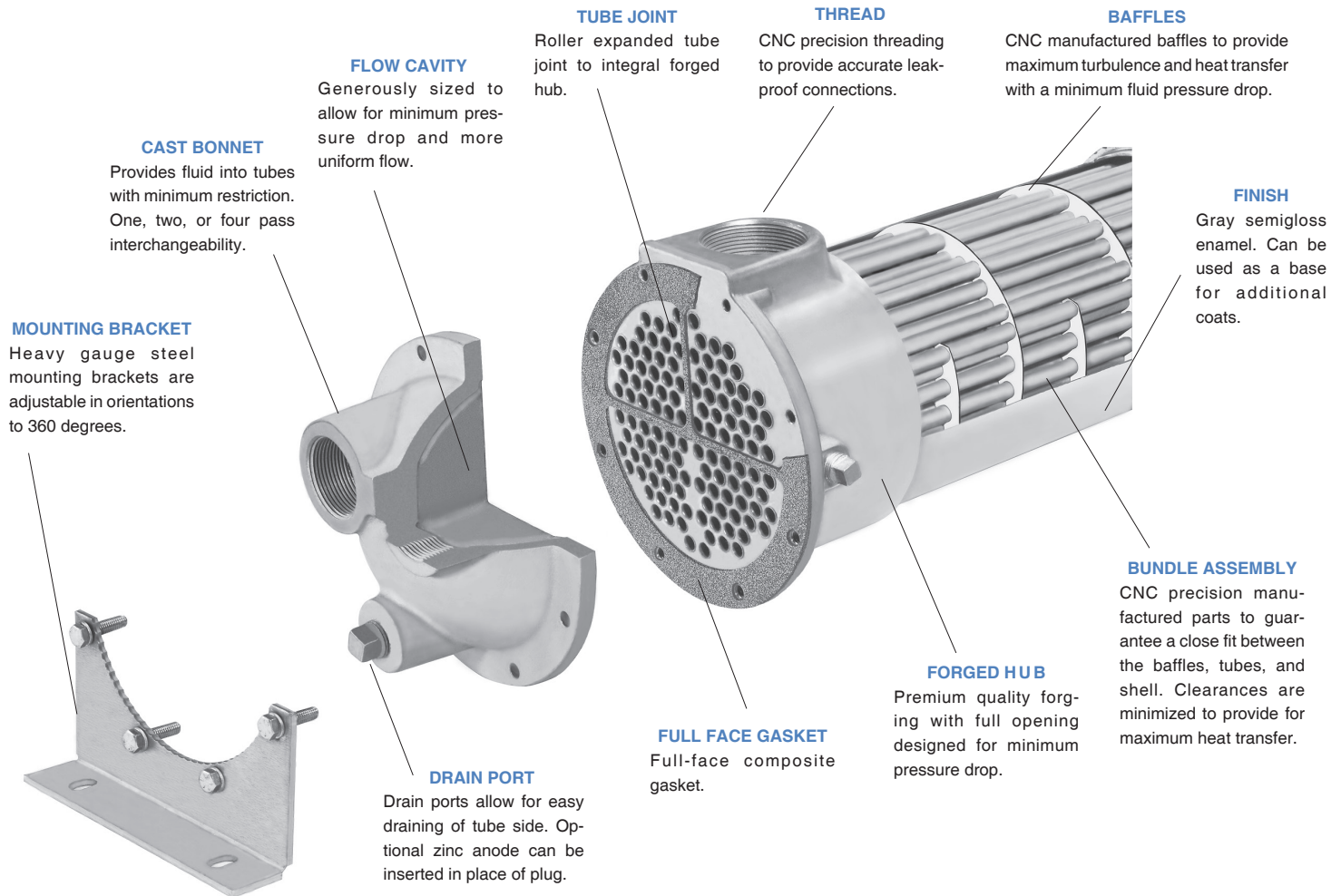
www.SouthwestThermal.com



EAB Series

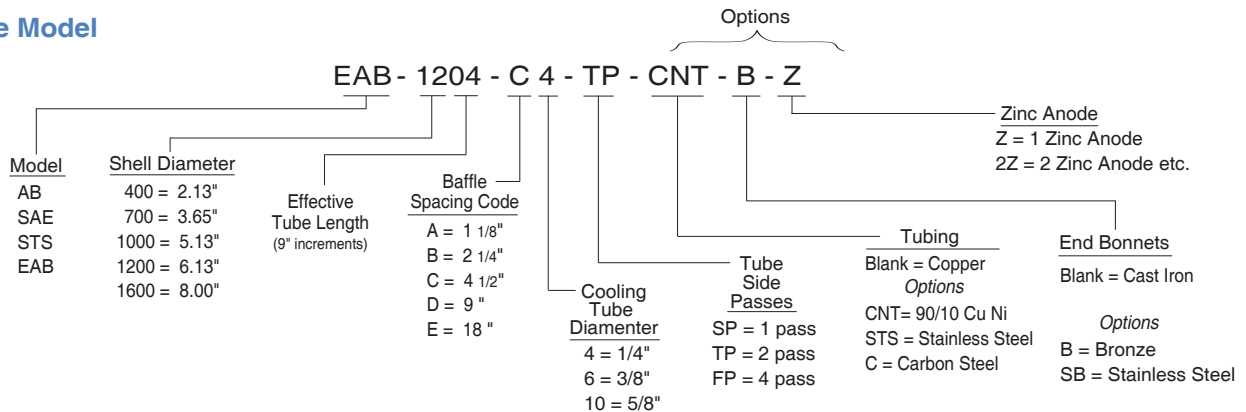
Expansion bellow minimizes the effects of differential expansion and contraction between the shell and cooling tubing, prolonging the overall life of the heat exchanger by reducing fatigue. Fixed tube construction heat exchangers with NPT connections. Made of brass with 90/10 copper nickel cooling tubes, stainless steel expansion bellows, and cast iron end bonnets. Standard sizes from 3.5" through 8" diameters, and from 3.6 to 308 sq.ft. Standard one, two and four pass models are available.

- Computer generated data sheet available for any application
- Operating pressure for tubes 150 PSI.
- Operating pressure for shell 300 PSI.
- Operating temperature 300 °F.
- Can be customized to fit any applications.
- Cools: Fluid power systems, rock crushers, presses, shears, lubrication equipment for paper machinery, gear drives, marine transmissions, etc.



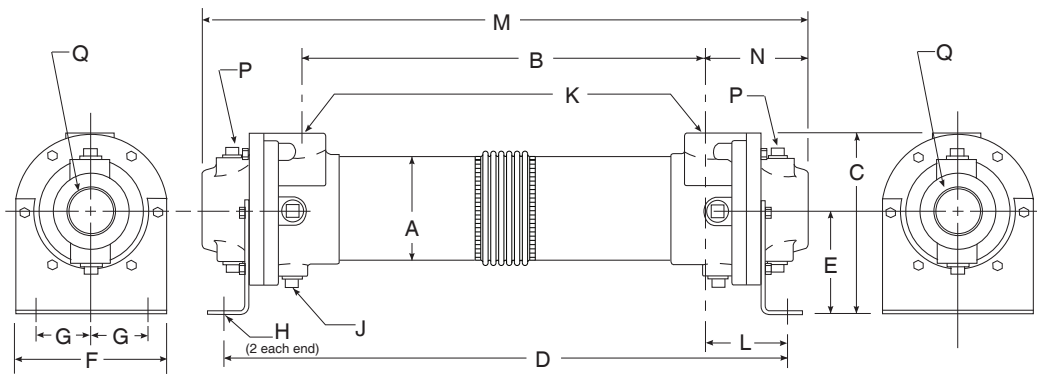
UNIT CODING

Example Model



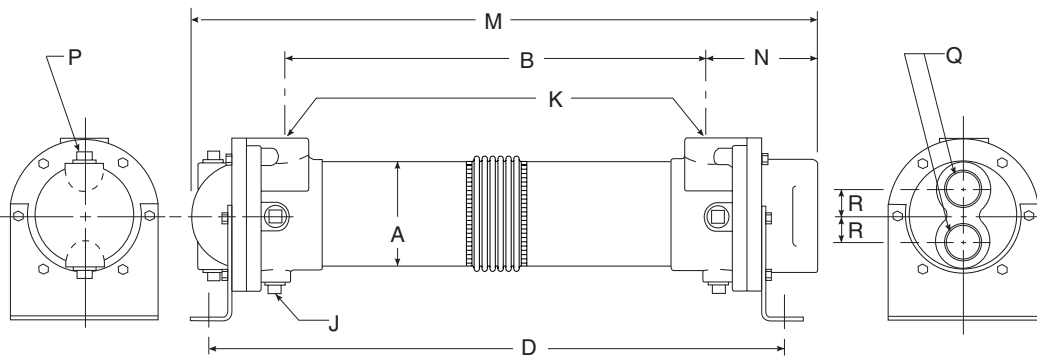
STANDARD CONSTRUCTION MATERIALS & RATINGS

Standard Model	AB Series	SAE Series	STS Series	EAB Series	Standard Unit Ratings
Shell	Brass	Brass	316 Stainless Steel	Steel	Operating Pressure Tubes.....150 psig
Tubes	Copper	Copper	316 Stainless Steel	90/10 Copper Nickel	
Baffle	Aluminum / Brass	Brass	316 Stainless Steel	Brass	
Integral End Hub	Forged Brass	Forged Brass	316 Stainless Steel	Forged Brass	Operating Pressure Shell.....300 psig
End Bonnets	Cast Iron	Cast Iron	316 Stainless Steel	Cast Iron	
Mounting Brackets	Steel	Steel	Steel	Steel	Operating Temperature 300 °F
Gasket	Hypalon Composite	Hypalon Composite	Hypalon Composite	High Temp Gasket	
Expansion Bellows	—	—	—	Stainless Steel	



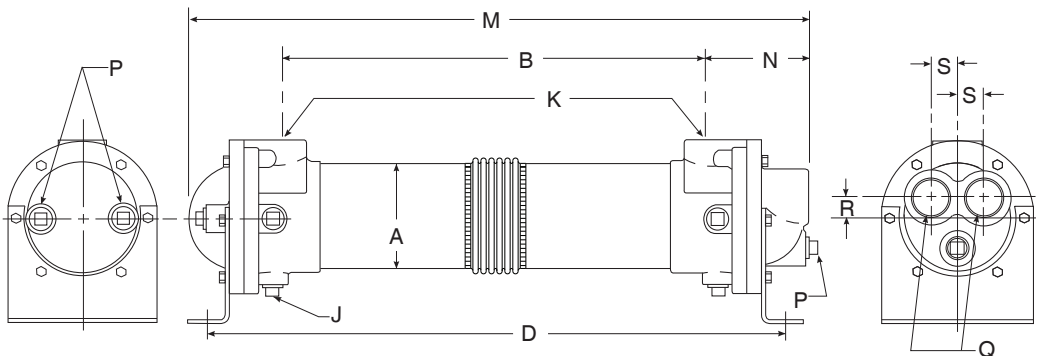
SINGLE PASS (SP)

Model	M	N	P NPT	Q NPT
EAB-701	13.47	3.24	(4)	1.50
EAB-702	22.47		.38	
EAB-703	31.47			
EAB-704	40.47			
EAB-1002	23.60	4.05	(4)	2.00
EAB-1003	32.60		.38	
EAB-1004	41.60			
EAB-1202	24.38			
EAB-1203	33.25	4.88	(4) .50	3.00
EAB-1204	42.12			
EAB-1205	51.12			
EAB-1206	60.25			
EAB-1207	69.25			
EAB-1208	78.12			
EAB-1209	87.12			
EAB-1210	96.12			
EAB-1602	26.62	6.52	(4) .50	4.00
EAB-1603	35.62			
EAB-1604	44.62			
EAB-1605	53.62			
EAB-1606	62.62			
EAB-1607	71.62			
EAB-1608	80.62			
EAB-1609	89.62			
EAB-1610	98.62			



TWO PASS (TP)

Model	M	N	P NPT	Q NPT	R
FAB-701	13.28	3.30	(2) .38	1.00	.88
FAB-702	22.28				
FAB-703	31.28				
FAB-704	40.28				
FAB-1002	23.29	3.80	(2) .38	1.50	1.19
FAB-1003	32.29				
FAB-1004	41.29				
FAB-1202	23.94				
FAB-1203	32.81	4.56	(2) .50	2.00	1.44
FAB-1204	41.69				
FAB-1205	50.69				
FAB-1206	59.81				
FAB-1207	68.81				
FAB-1208	77.69				
FAB-1209	86.69				
FAB-1210	95.69	6.08	(2) .50	2.50	1.88
FAB-1602	25.10				
FAB-1603	34.10				
FAB-1604	43.10				
FAB-1605	52.10				
FAB-1606	61.10				
FAB-1607	70.10				
FAB-1608	79.10				
FAB-1609	88.10				
FAB-1610	97.10				



FOUR PASS (FP)

Model	M	N	P NPT	Q NPT	R	S
EAB-701	13.42					
EAB-702	22.42		(3)			
EAB-703	31.42	3.24	.38	.75	.62	.88
EAB-704	40.42					
EAB-1002	23.55		(3)			
EAB-1003	32.55	4.06	.38	1.00	.75	1.19
EAB-1004	41.55					
EAB-1202	24.44					
EAB-1203	33.31					
EAB-1204	42.19					
EAB-1205	51.19					
EAB-1206	60.31	4.90	(3)	1.50	1.06	1.44
EAB-1207	69.31		.50			
EAB-1208	78.19					
EAB-1209	87.19					
EAB-1210	96.19					
EAB-1602	26.72					
EAB-1603	35.72					
EAB-1604	44.72					
EAB-1605	53.72		(3)	2.00	1.38	1.88
EAB-1606	62.72	6.48	.50			
EAB-1607	71.72					
EAB-1608	80.72					
EAB-1609	89.72					
EAB-1610	98.72					

COMMON DIMENSIONS & WEIGHTS

Model	A	B	C	D	E	F	G	H	J NPT	K NPT	L	Approx. Weight	Model
EAB-701	3.66	7.00	6.25	12.38	3.62	5.25	1.50	.44ø x 1.00	(2) .38	1.00	2.69	23	EAB-701
EAB-702		16.00		21.38								29	EAB-702
EAB-703		25.00		30.38								33	EAB-703
EAB-704		34.00		39.38								49	EAB-704
EAB-1002	5.13	15.50	7.38	21.62	4.00	6.75	2.00	.44ø x 1.00	(6) .38	1.50	3.06	54	EAB-1002
EAB-1003		24.50		30.62								76	EAB-1003
EAB-1004		33.50		39.62								82	EAB-1004
EAB-1202		14.62		21.50								79	EAB-1202
EAB-1203	6.13	23.50	8.81	30.38	4.75	7.50	2.50	.44ø x 1.00	(6) .38	2.00	3.44	98	EAB-1203
EAB-1204		32.38		39.25								115	EAB-1204
EAB-1205		41.38		48.25								130	EAB-1205
EAB-1206		50.50		57.38								150	EAB-1206
EAB-1207		59.50		66.38								170	EAB-1207
EAB-1208		68.38		75.25								190	EAB-1208
EAB-1209		77.38		84.25								210	EAB-1209
EAB-1210		86.38		93.25								230	EAB-1210
EAB-1602		8.00		13.60								12.13	22.38
EAB-1603	22.60		31.38	170	EAB-1603								
EAB-1604	31.60		40.38	200	EAB-1604								
EAB-1605	40.60		49.38	225	EAB-1605								
EAB-1606	49.60		58.38	250	EAB-1606								
EAB-1607	58.60		67.38	275	EAB-1607								
EAB-1608	67.60		76.38	315	EAB-1608								
EAB-1609	76.60		85.38	350	EAB-1609								
EAB-1610	85.60		94.38	390	EAB-1610								